

Company Profile

Introduction:

Doha Precast Factory (DPF) established in Qatar 2008 located in Mesaieed Industrial City about 30KM from Doha. The Factory meant to produce reinforced Concrete Pipes and fittings in low head and gravity flow systems and Precast Manhole system. The present concrete pipes and produce in the DPF design utilizing EPDM gasket , and T- Locking system PVC, H.D.P.E. and GRP lining and externally coated by coal tar epoxy (optional). The production range is from 200mm to 3600mm Internal Diameter. The manhole system is suitable for foul Sewerage, Storm water drainage and Sewage with GRP lining and without lining. The Range for the Manhole is ID900mm to 4000mm. All the products are especially developed for drainage system in the generally corrosive soils and ground water of **Qatar and G.C.C. coastal areas.**

The RC Pipe and Manhole designed to be with stand against external load and to suit client specifications and site requirements. Doha Precast Factory is Producing Precast JRC 6, JRC 12, JRC 14, LDR Changers and Segments



Standards and Quality Assurance:

All products are manufactured in accordance with relevant standard of ASTM, BSI and other standards mention in the QCS reinforced concrete pipes, Manholes, other Precast Elements and raw materials, which are clearly defines all the performance tests necessary to ensure that the product will perform satisfactorily in service and be durable for long period.

The Doha Precast Factory is certified international Quality system as **ISO 9001:2008 Quality Management Systems, ISO 14001:2004 Environmental Management Systems and OHSAS 18001:2007 Occupational Health and Safety Management systems.** Doha precast Factory has the Laboratory accredited by IAS ISO IEC 17025 for most of the parameters (34) related to **Aggregate test, Concrete Test and Concrete Pipe test as per BS and ASTM** Doha Precast Ensure about not only quality of Product, but also it will ensure about the Safety and Environmental aspects.

The Doha Precast Factory is **certified for Storm Sewer and Culvert pipe and Manholes Plant by American Concrete Pipe Association- Q-Cast** and **Certified by BSI for KITE Mark, Concrete pipes and Fittings, unreinforced, steel fiber and reinforced and fiber-cement products – pressure pipes and joints.** While we believe that this certification scheme gives added assurance that the products fully comply through third party scheme of supervision administrated by the quality assurance services. In addition to monitoring all aspects of quality control procedure from receipt of raw materials through the production, inspection and testing stages to the efficient loading and transportation of products to site.



Technology:

Doha Precast Factory is equipped with latest modern technology to meet with our client's satisfaction by producing consistent and high quality products meeting the latest international standards.

Following technology suppliers are utilized in Doha Precast Factory:



Pipe Casting Machine and Moulds (Forms)-M/s PEDERSHAAP – Denmark

3 Machine 2station each machine



EOT Crane-M/s DEMAG –Germany -3 N0s. 15,30,40 Ton

Gantry Crane -1 No. 25 Ton



Concrete Batching Plant – M/s IMER – Italy -1No. (1.5m³)

SKAKO-Denmark-2Nos.(1.0m³)



Steel Cage Machine –M/s MBK – Germany – 2 Nos. 4000mm



Fork Lifts –M/s KALMAR – Sweden -4Nos. 25, 25, 35, 35

Hyundai -1No. 16 Ton, Komatsu-7Ton



Automatic Coating Machine –M/s GRACO - USA



Pipe Cutting & Milling Machine –M/s KOLB - Germany



Laboratory Equipments – M/s ELE - England



Hydrostatic Testing Machine –M/s MESSMANN - Germany



Pipe Crushing Machine- M/s PEDERSHAAP - Denmark

Manhole Base casting Bit and Mould M/s PEDERSHAAP

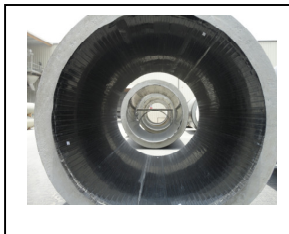
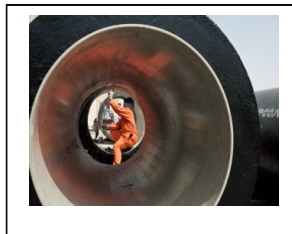


Internal Lining:

Doha Precast Factory can produce Reinforced concrete pipe lined with H.D.P.E., P.V.C. or G. R. P. and Manhole lined with GRP or unlined or Coal tar epoxy coating

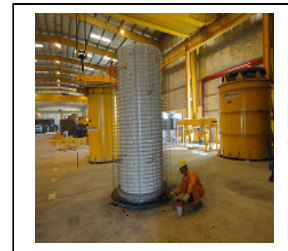
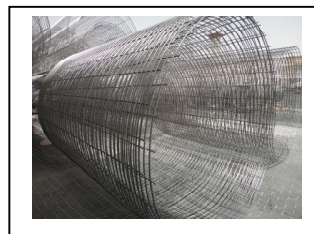
The pipe and Manhole shaft will be 360° lined to protect the internal service and against chemical attack from liquids conveyed. During the fabrication process of the pipe and Manhole shaft the sheet lining is placed around the core, so the concrete is casted around the ribs or the anchor if we use G.R.P. liner once the concrete is set, the lining is locked mechanically to the pipe and Manhole Shaft interior and can tolerate large movements at the joints without losing its physical integrity, while the continuity of the lining is assured by welding or laminating each individual pipe joint to the next.

The quality control program of Doha Precast Factory shows how we can test any welded joint to ensure that the welding processes fulfilled the requirements.



Reinforcement:

Reinforcement cage required for the reinforced concrete pipe and Manhole shaft are produced from cold drawn steel wire to meet with BS and ASTM related standards. On automatic welding machine (MBK- Germany). As the cage revolves, steel wire is wind in spiral around longitudinal bars and automatically welded at each contacts point till the required length of cage completed.



Water Protection Coating

Doha Precast Factory has a facility to coat the service of reinforced concrete pipe, Manhole and other precast elements with coal tar epoxy coating with normally applied to thickness of between 200 to 1000 micron by either Graco machine technology or brush to protect the exterior of the pipe from attack by potentially destructive soil chemicals. The coating can tolerate soil stresses and pipe deflections without cracking or disbanding. Also Doha Precast Factory's laboratory is furnished with all required test equipments to control thickness and bonding criteria of coating.



Product Dimension

Doha Precast Factory producing pipe effective length with from 200 to 3000 mm ID, Manhole have the range of 1000 to 3000 mm for any height of the shaft having landing slab and dimensions are mentioned in Quality documents of DPF and Doha Precast Factory has very high technology to produce any c

The KOLB cutting and milling machine is sophisticated to do these activities with very high performance and accuracy.



Materials:

Doha Precast Factory committed to use very high quality materials such as cement, full crushed gabbro aggregate, sweet water and additives in the manufacturing product, which are constantly monitored at each work to ensure compliance with relevant standards the process of producing a dense high strength concrete involves electronic monitoring to control water content and patch weighing the mixing of material.

Quality Control:

Doha Precast Factory offer superior quality concrete pipe, Manhole and other precast element products and services to our customers. We established Quality Control and Research Department staffed with qualified and experienced personnel and equipped with modern measuring and testing devices. The function of Quality Control and Research Department is to ensure that Doha Precast Factory products are manufactured in full compliances to the project specification, specified national standard, approved project quality assurance and Quality Control Programme of Doha Precast Factory.

Doha Precast Factory Quality Control and Research Departments are supported by Group Engineering Department consisting of experienced and professional engineers dedicated to support and upgrade the quality standard, when required.



Besides our internal quality an audit, Doha Precast Factory is audited annually by BSI and American Concrete Pipe Association for Q-Cast and BSI for Kite mark, this will keep us alert to maintain and improve our quality product and to add more reinforcement to our strong platform.



Doha precast Factory has the Laboratory accredited by IAS for ISO IEC 17025 for most of the parameters (34) related to Aggregate test, Concrete Test and Concrete Pipe test as per BS and ASTM as required by QCS 2014

Handling, Storage and Transportation :



Each shipment of finished product is loaded, should be blocked and securely fasten to avoid damages during transportation.

Unloading should be controlled by the customer representative at the site, following Doha Precast Factory's instruction.

Care should be taken to avoid damages especially the spigots and sockets.

Use appropriate lifting equipments for the offloading.

Nylon slings / Web slings are recommended to be used for offloading and should be used around the product and never through it.



Stacking of pipes or Manhole shaft or other precast elements on even ground on timber to protect mainly their sockets and spigots. The pipe bottom must be securely chocked at both ends using suitable timber wedges.

Rubber gasket should be kept clean away from oil, grease, excessive heat and out of the direct rays of the sun.

Installation procedure could be found in the Doha Precast Factory's technical submittal.

For the Technical and structure details and specification will be presented with Technical submittal as per project specification or Clients requirements